

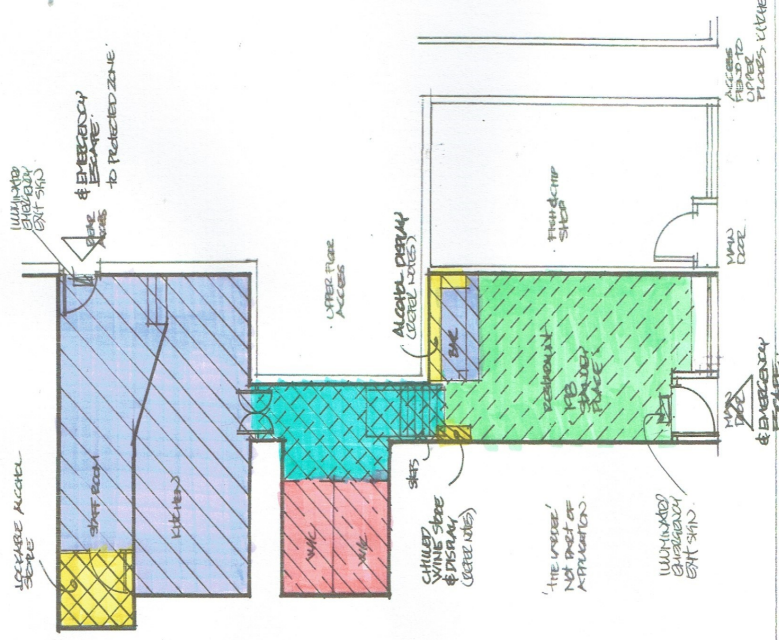
**- KEY TO PLAN -**

- 2.7m<sup>2</sup> • LOCKER ALCOHOL STORE & ALCOHOL DISPLAY
- 5.7m<sup>2</sup> • BENCHES, KITCHEN & BAR AREA ACCESSED BY STAFF ONLY. YELLOW SHADING DENOTES LOCATIONS OF ALCOHOL STORAGE & DISPLAY
- 7.8m<sup>2</sup> • SANITARY FACILITY FOR PUBLIC & STAFF
- 6.6m<sup>2</sup> • COMMUNAL ACCESS AREAS (SEE NOTES BELOW)
- 22.2m<sup>2</sup> • DENIES AREA FOR THE CONSUMPTION OF FOOD & ALCOHOL ACCESSED BY PUBLIC & CHILDREN & YOUNG PERSONS

**- NOTES TO PLAN -**

- KITCHENS TO BE PROVIDED WITH FOAM & CARBON DIOXIDE EXTINGUISHER, FIRE BUCKET
- ALCOHOL DISPLAY: BEHIND BAR, LOCATIONS RELATING TO RESTROOM (WITH PUBLIC ENTRY) & WITHIN GLASS FRONTED REFRIGERATED CABINET
- GENERAL DESCRIPTIONS:
  - PATRONS HAVE LOUVER DOOR TO RESTAURANT & THE NEW USE UTILISES THE SAME LAYOUT
  - A NEW CHINA/ORDERING BAR IS BEING INTRODUCED
  - DISABLED ACCESS IS LIMITED DUE TO 8 IN STEPS BETWEEN DINING & CONNECTION FACILITY

FOR ISMART PLAN REFER SEP PLAN



**- KEY TO PLAN -**  
 - STANLEY PLACE -  
 - HARBOR STREET -

Rev	Description	Date
1	THE RED HERRING SAPOD RESTAURANT 196 STANLEY PLACE HERRING	
2	THE RED HERRING LIKENING LAYOUT PLAN	
Drawn by	Scale	Sheet
DAVID MAC/EA	1:100	1000
Checked by	Drawn by	Sheet
AS/2101/107	AS/2101/107	1000